



Wide range fasteners manufacturer.

# FURNITURE FASTENERS CATALOG



\* Screws

\* Bolts

\* Nuts

\* Anchors

\* Studs/Rods

\* Hinges

\* Breaking Arms

\* Locks

\* Driver Slides

\* Gas Springs

\* Door Handles

\* Allen Keys



**ADDRESS :**

Fevzi Çakmak Mah. 10768. Sk.  
Zip Code: 42050  
Karatay / Konya / TÜRKİYE

+90 332 345 0427

+90 536 566 6990



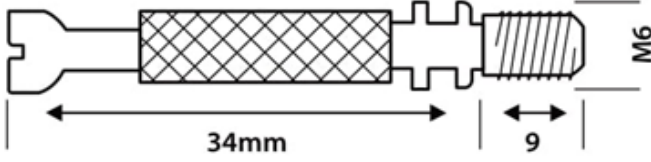
[www.bitorkfasteners.com](http://www.bitorkfasteners.com)



[info@bitorkfasteners.com](mailto:info@bitorkfasteners.com)



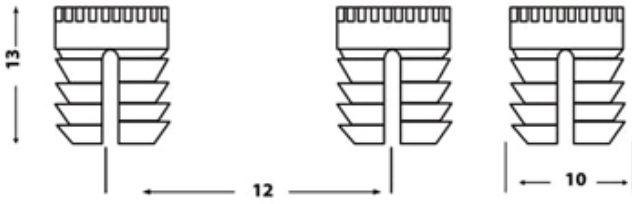
## Minifix Shaft Connection



Teknik Bilgiler / Technical Informations			
WIDTH GENİŞLİK	HEIGHT BOY	DIAMETER ÇAP	WEIGHT AĞIRLIK / gr/p
M6	34	9	6,78

CQ15 malzemeden üretilmiştir.

## Minifix Plastic Anchor



Teknik Bilgiler / Technical Informations			
WIDTH GENİŞLİK	HEIGHT BOY	DIAMETER ÇAP	WEIGHT AĞIRLIK / gr/p
11	13	6	0,67

**ADDRESS :**

Fevzi Çakmak Mah. 10768. Sk.  
Zıp Code: 42050  
Karatay / Konya / TÜRKİYE

+90 332 345 0427

+90 536 566 6990



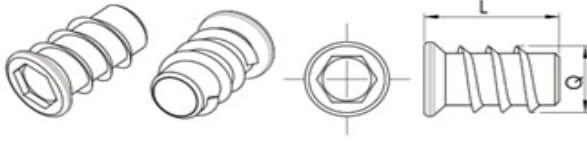
[www.bitorkfasteners.com](http://www.bitorkfasteners.com)



[info@bitorkfasteners.com](mailto:info@bitorkfasteners.com)

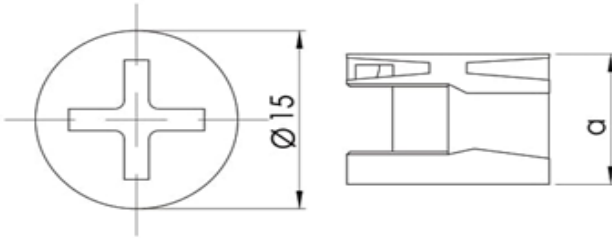


## Zamak Metal Anchor



Teknik Bilgiler / Technical Informations				
THREAD TYPE DIŞ TİPİ	DIAMETER ÇAP(Q)	HEIGHT BOY(L)	COATING RENK	WEIGHT AĞIRLIK / gr/p
M6	8	13	ÇİNKO	3,00
M6	8	11	ÇİNKO	2,90
M8	10	20	ÇİNKO	3,30
M8	10	15	ÇİNKO	3,80

## Zamak Head



Teknik Bilgi / Technical Informations				
DIAMETER ÇAP	HEIGHT BOY	MATERIAL MALZEME	COATING KAPLAMA	WEIGHT AĞIRLIK / gr/p
15	12	ZAMAK	ÇİNKO / NİKEL	5,30

**ADDRESS :**

Fevzi Çakmak Mah. 10768. Sk.  
Zıp Code: 42050  
Karatay / Konya / TÜRKİYE

+90 332 345 0427

+90 536 566 6990



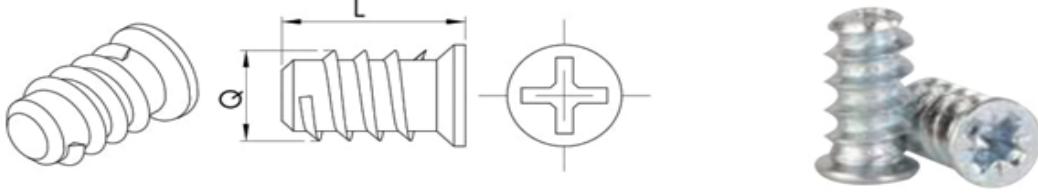
[www.bitorkfasteners.com](http://www.bitorkfasteners.com)



[info@bitorkfasteners.com](mailto:info@bitorkfasteners.com)

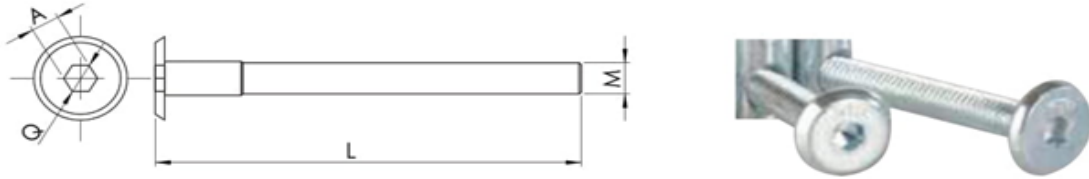


## Euro Screw



Teknik Bilgiler / Technical Informations			
Q	6	6	6
L	9	14	20
Weight / Ağırlık/ gr/p		22,76	

## Hex Head Furniture Bolts

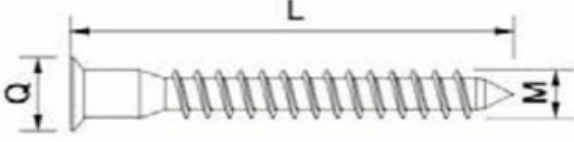


Teknik Bilgiler / Technical Informations				
M	L	Q	A	Weight / Ağırlık/ gr/p
6	15	14	4	4,80
6	20	14	4	5,64
6	30	14	4	7,35
6	35	14	4	8,20
6	40	14	4	9,05
6	50	14	4	10,77
6	60	14	4	12,48
6	70	14	4	14,19
6	80	14	4	15,90
6	90	14	4	17,61
6	100	14	4	19,32
6	110	14	4	21,00
6	120	14	4	22,74
6	130	14	4	24,45
6	140	14	4	26,16
6	150	14	4	27,87





## Confirmat/Cabin Screws



Teknik Bilgiler / Technical Informations			
Q	L	AÇIKLAMA	Weight / Ağırlık/ gr/p
6,3	50	KÜT	18,5
6,3	50	SİVRİ	18,5
6,3	50	KÜT-YILDIZ	18,5
6,3	50	SİVRİ-YILDIZ	18,5

**ADDRESS :**

Fevzi Çakmak Mah. 10768. Sk.  
Zip Code: 42050  
Karatay / Konya / TÜRKİYE

+90 332 345 0427

+90 536 566 6990



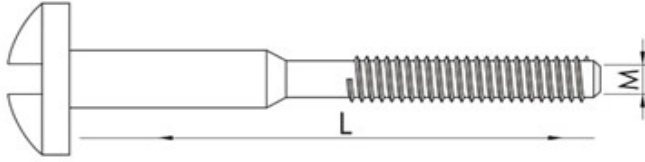
[www.bitorkfasteners.com](http://www.bitorkfasteners.com)



[info@bitorkfasteners.com](mailto:info@bitorkfasteners.com)

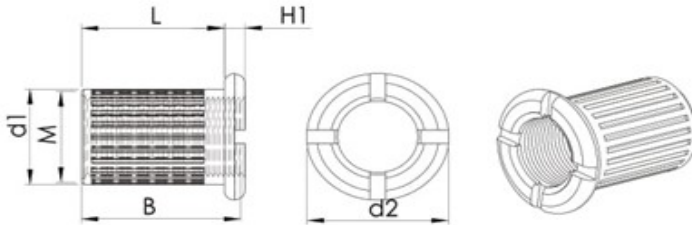


## Assembly Screws



Teknik Bilgiler / Technical Informations		
M	L	Weight / Ağırlık/ gr/p
6	15	4,60
6	20	5,47
6	30	7,20
6	35	8,04
6	40	8,90
6	50	10,60
6	60	12,30
6	70	14,02
6	80	15,73

## Assembly Nuts

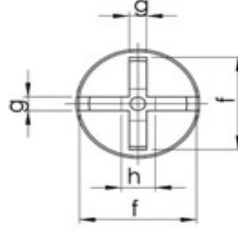
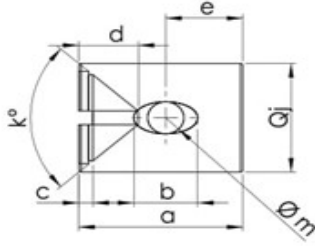


Teknik Bilgiler / Technical Informations						
M	L	d1	d2	B	H1	Weight Ağırlık/ gr/p
6	10,5	8,8	13,5	11	2,5	4,6



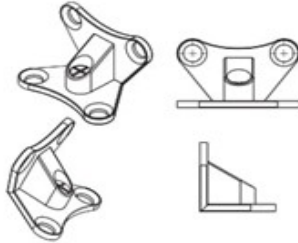


## Cylindrical Furniture Nut



Teknik Bilgiler / Technical Informations		
	min.	max.
a	13,8	14
j	9,9	10
i		6,4
f		7,2
g		1,7
e		5
b		9
øm	5,2	5,3
d	2,3	2,8
k°		86
Weight / Ağırlık / gr/p		4,00

## Wings Fastening Group



Teknik Bilgiler / Technical Informations		
H5 Zamak \Çinko	H5 Zamak \ZINC	H5 Zamak \ZINK
H5 Zamak \Nikel	H5 Zamak \NICKEL	H5 Zamak \NICKEL
H5 zamak \Sarı	H5 zamak \YELLOW	H5 zamak \GELB
Weight / Ağırlık / gr/p		21,00





## Stud Bolts



Teknik Bilgiler / Technical Informations							
Thread size / Anma çapı		M 8		Thread size / Anma çapı		5/16	
Major Dia / Diş üstü çapı		min.	7,76	Diş Adımı / Pitch		UNC	18
		max.	7,97			UNF	24
Material / Malzeme		St37		Material / Malzeme		St37	

Thread size / Anma çapı		M 8		Thread size / Anma çapı		5/16	
Length / Boy	Paso Boyu / Thread Land	Weight / Ağırlık GR		Length / Boy	Paso Boyu / Thread Land	Weight / Ağırlık gr/p	
100	TAM P./FULL THR.	30,20		100	TAM P./FULL THR.	28,00	
110	35x35	33,22		110	35x35	30,80	
120	35x35	36,24		120	35x35	33,60	
130	35x35	39,26		130	35x35	36,40	
140	35x35	42,28		140	35x35	39,20	

**ADDRESS :**

Fevzi Çakmak Mah. 10768. Sk.  
Zip Code: 42050  
Karatay / Konya / TÜRKİYE

+90 332 345 0427

+90 536 566 6990



[www.bitorkfasteners.com](http://www.bitorkfasteners.com)

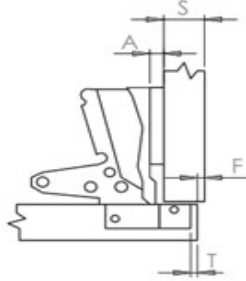
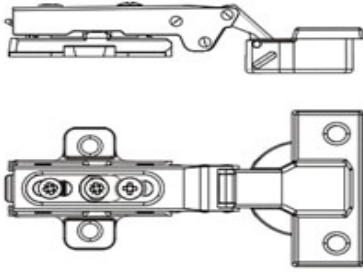


[info@bitorkfasteners.com](mailto:info@bitorkfasteners.com)





## Fulloverlay Hinges



Teknik Bilgiler / Technical Informations	
FULOVERLAY HINGES / DÜZ MENTEŞE 0 mm.	
Opening Degree / Açılma açısı	110°
Calyx Diameter / Çanak Çapı	35 mm.
Calyx Depth / Çanak Derinliği	11,2 mm.
Hinges's Calyx / Menteşe Çanağı	Steel
Weight / ağırlık	58-60 gr.
Formula / Formül	$A=18+F+T-S$
Side Wall Thickness	
S Yan Duvar Kalınlığı	18 16
Base Thickness Altlık Kalınlığı	
A Joint	5 7 7 7 9 9
F Fuga	1 1 2 1 1 2
Calyx Space	
T Çanak Mesafesi	4 6 5 4 6 5

**ADDRESS :**

Fevzi Çakmak Mah. 10768. Sk.  
Zip Code: 42050  
Karatay / Konya / TÜRKİYE

+90 332 345 0427

+90 536 566 6990



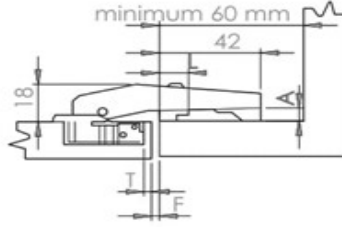
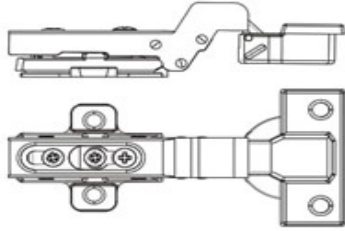
[www.bitorkfasteners.com](http://www.bitorkfasteners.com)



[info@bitorkfasteners.com](mailto:info@bitorkfasteners.com)



## Halfoverlay Hinges

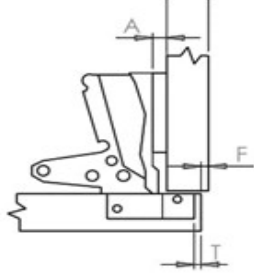


Teknik Bilgiler / Technical Informations	
<b>HALFOVERLAY HINGES / DEVEBOYNU MENTEŞE 9 mm.</b>	
Opening Degree / Açılma açısı	110°
Calyx Diameter/ Çanak Çapı	35 mm.
Calyx Depth / Çanak Derinliği	11,2 mm.
Hinges's Calyx / Menteşe Çanağı	Steel
Weight / ağırlık	58-60 gr.
Formula / Formül	A=9+F+T-S
Side Wall Thickness	
S Yan Duvar Kalınlığı	18 16
Base Thickness Altlık Kalınlığı	
A	5 7 7 7 7 -
Joint	
F Fuga	10 10 11 9 10 -
Calyx Space	
T Çanak Mesafesi	4 6 5 5 4 -





## Inset Hinges



Teknik Bilgiler / Technical Informations	
<b>INSET HINGES / SUPER DEVEBOYNU MENTEŞE 18 mm.</b>	
Opening Degree / Açılma açısı	110°
Calyx Diameter/ Çanak Çapı	35 mm.
Calyx Depth / Çanak Derinliği	11,2 mm.
Hinges's Calyx / Menteşe Çanağı	Steel
Weight / ağırlık	58-60 gr.
Formula / Formül	$A=F+T$
	<b>18</b>
A	Base Thickness Altlık Kalınlığı
F	Joint Fuga
T	Calyx Space Çanak Mesafesi

**ADDRESS :**

Fevzi Çakmak Mah. 10768. Sk.  
Zıp Code: 42050  
Karatay / Konya / TÜRKİYE

+90 332 345 0427

+90 536 566 6990



[www.bitorkfasteners.com](http://www.bitorkfasteners.com)



[info@bitorkfasteners.com](mailto:info@bitorkfasteners.com)



## Hydraulic Hinges



Teknik Bilgiler / Technical Informations	
HYDRAULIC HINGE / PİSTONLU MENTEŞE	
Opening Degree / Açılma açısı	110°
Calyx Diameter/ Çanak Çapı	35 mm.
Calyx Depth / Çanak Derinliği	11,2 mm.
Hinges's Calyx / Menteşe Çanağı	Steel
Weight / ağırlık	106-109 gr.





## 45 Degree Hinges



### Teknik Bilgiler / Technical Informations

45 DEGREE HINGES /45 DERECE MENTEŞE	
Opening Degree / Açılma açısı	45°
Calyx Diameter/ Çanak Çapı	35 mm.
Calyx Depth / Çanak Derinliği	11,2 mm.
Hinges's Calyx / Menteşe Çanağı	Steel
Weight / ağırlık	70-73 gr.

**ADDRESS :**

Fevzi Çakmak Mah. 10768. Sk.  
Zip Code: 42050  
Karatay / Konya / TÜRKİYE

+90 332 345 0427

+90 536 566 6990



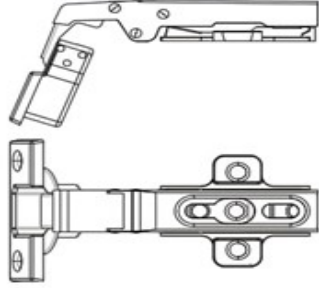
[www.bitorkfasteners.com](http://www.bitorkfasteners.com)



[info@bitorkfasteners.com](mailto:info@bitorkfasteners.com)



## 90 Degree Hinges



Teknik Bilgiler / Technical Informations	
<b>90 DEGREE HINGES /90 DERECE MENTEŞE</b>	
Opening Degree / Açılma açısı	90°
Calyx Diameter/ Çanak Çapı	35 mm.
Calyx Depth / Çanak Derinliği	11,2 mm.
Hinges's Calyx / Menteşe Çanağı	Steel
Weight / ağırlık	68-70 gr.

**ADDRESS :**

Fevzi Çakmak Mah. 10768. Sk.  
Zip Code: 42050  
Karatay / Konya / TÜRKİYE

+90 332 345 0427

+90 536 566 6990



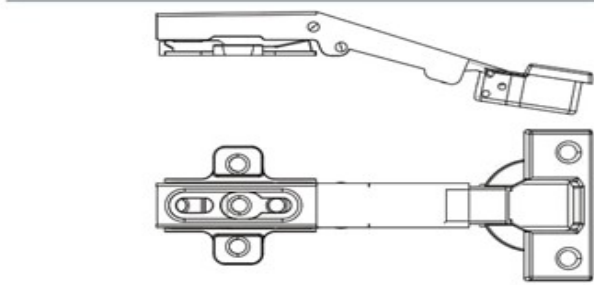
[www.bitorkfasteners.com](http://www.bitorkfasteners.com)



[info@bitorkfasteners.com](mailto:info@bitorkfasteners.com)



## 135 Degree Hinges



Teknik Bilgiler / Technical Informations	
<b>135 DEGREE HINGES / 135 DERECE MENTEŞE</b>	
Opening Degree / Açılma açısı	135°
Calyx Diameter/ Çanak Çapı	35 mm.
Calyx Depth / Çanak Derinliği	11,2 mm.
Hinges's Calyx / Menteşe Çanağı	Steel
Weight / ağırlık	78-81 gr.

**ADDRESS :**

Fevzi Çakmak Mah. 10768. Sk.  
Zip Code: 42050  
Karatay / Konya / TÜRKİYE

+90 332 345 0427

+90 536 566 6990



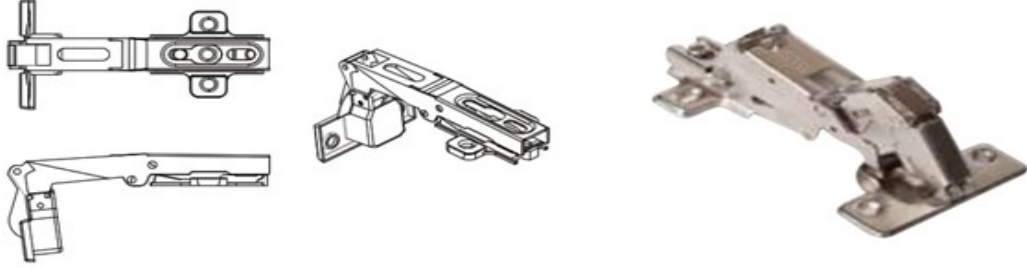
[www.bitorkfasteners.com](http://www.bitorkfasteners.com)



[info@bitorkfasteners.com](mailto:info@bitorkfasteners.com)



## 165 Degree Hinges



Teknik Bilgiler / Technical Informations	
<b>165 DEGREE HINGES / 165 DERECE MENTEŞE</b>	
Opening Degree / Açılma açısı	165°
Calyx Diameter/ Çanak Çapı	35 mm.
Calyx Depth / Çanak Derinliği	11,2 mm.
Hinges's Calyx / Menteşe Çanağı	Steel
Weight / ağırlık	142-144 gr.

**ADDRESS :**

Fevzi Çakmak Mah. 10768. Sk.  
Zip Code: 42050  
Karatay / Konya / TÜRKİYE

+90 332 345 0427

+90 536 566 6990



[www.bitorkfasteners.com](http://www.bitorkfasteners.com)

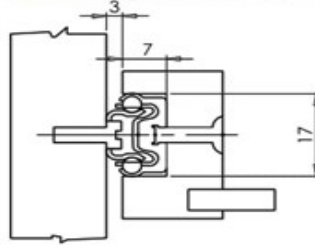
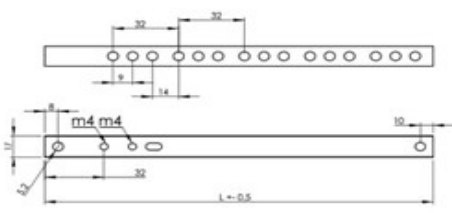


[info@bitorkfasteners.com](mailto:info@bitorkfasteners.com)





## 17mm Width Drawer Slide



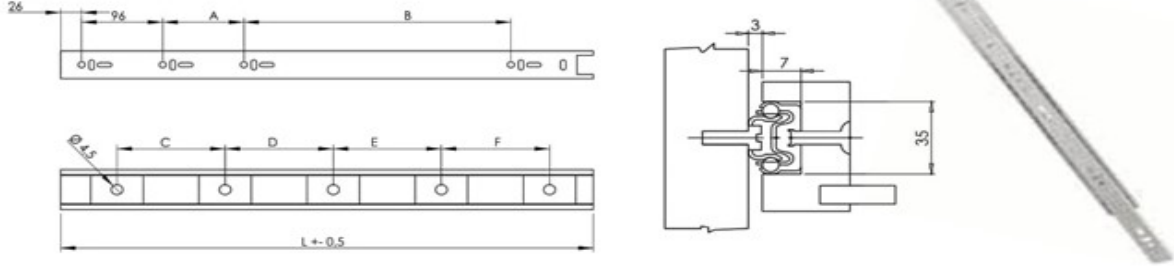
Teknik Bilgiler / Technical Informations					
LENGHT / BOY					
WIDTH / GENİŞLİK	310	342	374	406	438
17 mm TAŞIMA KAPASİTESİ / CARRYING CAPACITY MAX. (KG)	12	12	12	12	12

Sac kalınlığı 1.0 \* 1.0 mm. dir. / Metal sheet thickness is 1.0 \* 1.0 mm.





## 35mm Width Drawer Slide



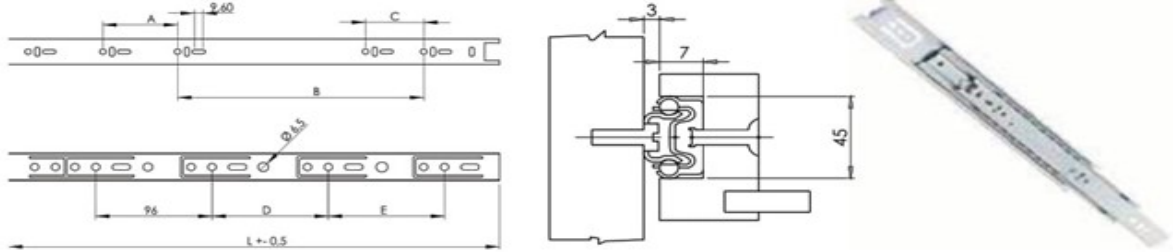
Teknik Bilgiler / Technical Informations						
LENGHT / BOY						
WIDTH / GENİŞLİK	300	350	400	450	500	550
35 mm TAŞIMA KAPASİTESİ / CARRYING CAPACITY MAX. (KG)	35	35	35	35	35	35

Sac kalınlığı 1.0 \* 1.0 \* 1.0 mm. dir. / Metal sheet thickness is 1.0 \* 1.0 \* 1.0 mm.





## 45mm Width Drawer Slide



Teknik Bilgiler / Technical Informations						
LENGHT / BOY						
WIDTH / GENİŞLİK	300	350	400	450	500	550
45 mm TAŞIMA KAPASİTESİ / CARRYING CAPACITY MAX. (KG)	45	45	45	45	45	45

Sac kalınlığı: 1.0 \* 1.0\* 1.2 mm. dir. / Metal sheet thickness is 1.0 \* 1.0 \*1.2 mm.





## 45,7mm Teleskopik Slide With Soft Close

SÜRGÜ UZUNLUĞU  
SLIDE LENGTH LSÜRGÜ HAREKETİ  
SLIDE TRAVEL

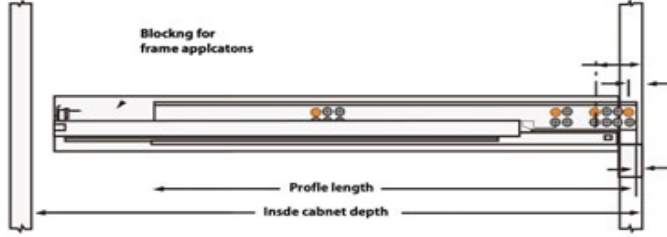
Teknik Bilgiler / Technical Informations		
	SÜRGÜ UZUNLUĞU SLIDE LENGTH L (mm)	SÜRGÜ HAREKETİ SLIDE TRAVEL (mm)
350 (14')	350	315
400 (16')	400	365
450 (18')	450	465
500 (20')	500	550

Et kalınlığı 1,2mm x 1,2 x 1,5 mm'dir.  
45 KG taşıma kapasitesi  
Thickness is 1,2 mm x 1,2 x 1,5 mm.  
45 KG carrying capacity  
Galvaniz ve kaplamalı seçenekleri ile  
üretim yapılmaktadır.  
The production can be choice of  
galvanised and coating.





## Concealed Drawer Slides



### Teknik Bilgiler / Technical Informations

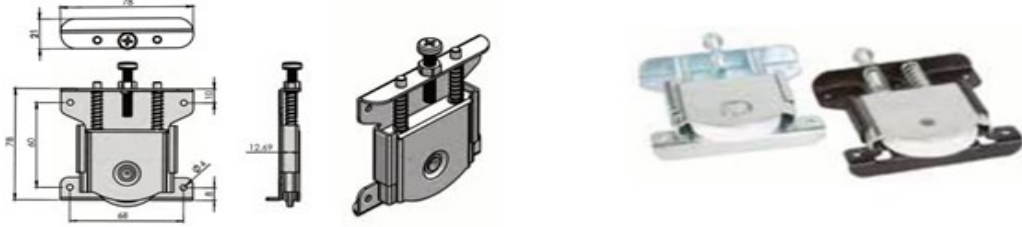
#### BOY / SIZE

30 cm  
35 cm.  
40 cm.  
45 cm.  
50 cm.  
55 cm.





## PKM 80 ADJUSTABLE SLIDING DOOR ROLLER



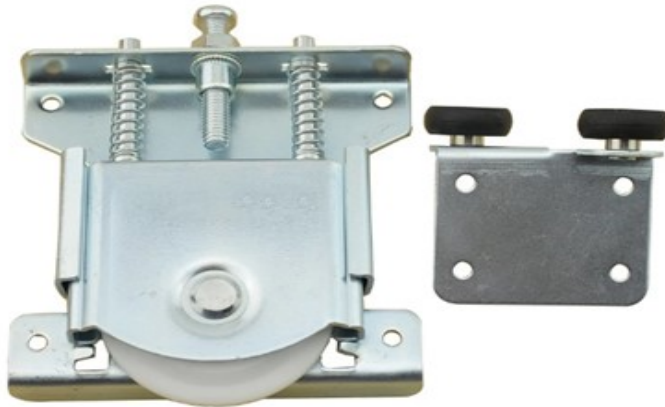
### Teknik Bilgiler / Technical Informations

Taşıma Kapasitesi / Carrying Capacity (max)	PKM 80 80 kg
---	-----------------

Kapak gönye ayarı; taşıyıcı mekanizma üzerinde bulunan ayar vidası ile yapılır ve sabitlenir. Taşıyıcı gövde sacı çinko kaplamalıdır. Taşıyıcı mekanizma, çelik rulman üzerine poliamid enjeksiyon baskı ve rodaj yapılmış makaralar ile çalışmaktadır. kapak paneli; taşıyıcı mekanizma makarasının ray profil kanalı içinde sabitlenen stoperin yuvasına oturması ile stoplanır.

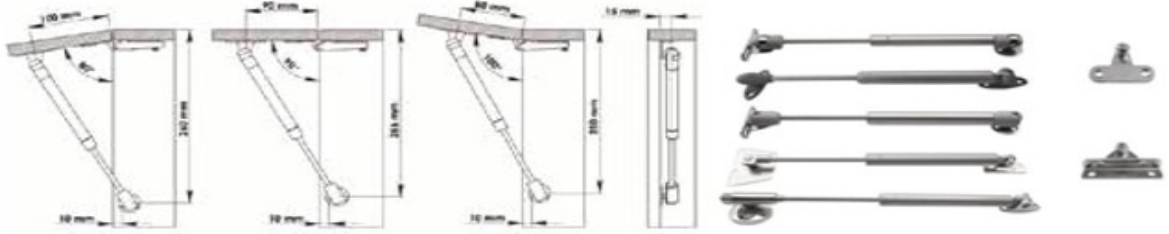
Door square regulations can be fix and adjust with on the carrier mechanism. Carrier body sheet metal zinc coated Carrier mechanism works on steel ball bearing rollers made of polyamide with injection pressure and edging. The door panel stop with carrier channel rail profile in the reel mechanism with a fixed stopper slot.

Die Türeinsteilung und -befestigung erfolgt über die Einstellschraube, die sich auf dem Trägermechanismus befindet. Der Trägerkörper ist verzinkt. Der Trägermechanismus laeuft auf kugelgelagerten Laufrollen aus Stahl mit Polyamid Injektion. Die Türpaneele stoppt indem die Trägermechanismus-Spule sich in dem Stoppernest, welches im Schienensystem fixiert ist, festsetzt.





## Gas Spring



Teknik Bilgiler / Technical Informations				
Yük / Loading (Newton)	60 N	80 N	100 N	120 N
Gövde Boyu (Kısa) / Body Length (Short)	75	75		
Gövde Boyu (Uzun) / Body Length (Long)	120	120	120	120

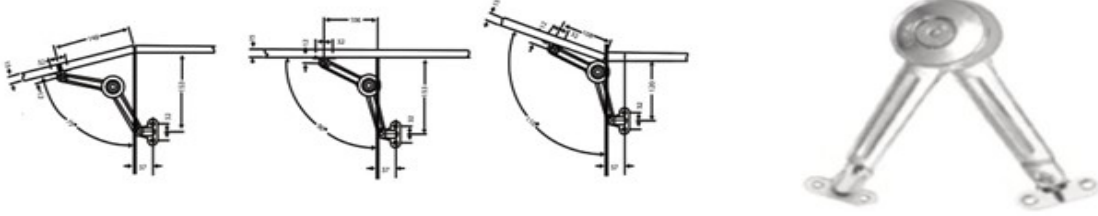
Gazlı piston alüminyum çerçeve ve tahta kapaklara kolay bir şekilde monte edilebilir.  
Gas spring is easily mounted on the wooden door and aluminium frame.  
Gasdruckdämpfer können ganz einfach an Aluminium-Rahmen und Holz-Türen montiert werden.

Gazlı pistonlarda makine yağı kullanımı işlevsel hatalara neden olabilir.  
Please do not use lubricating oil. It could affect the function of gas spring  
Die Verwendung von Schmieröl bei Gasfedern kann zu Funktionsstörungen führen.





## Breaking Arm



Teknik Bilgiler / Technical Informations			
Kapak Geniřlięi / Cabinet Lid Widht	Tek Kullanım / Intended for Single Use	Çift Kullanım / Intended for Double Use	
300 mm	6 kg	12 kg	
350 mm	5 kg	10 kg	
400 mm	5 kg	10 kg	
450 mm	4 kg	8 kg	
500 mm	4 kg	8 kg	
550 mm	3 kg	6 kg	
600 mm	3 kg	6 kg	

Lale makaslar endüstriyel standartlar göz önüne alınarak üretilmiştir.  
Hammade ve kaplama yapımında Avrupa DIN standartlarına uygun üretim yapılmıştır.  
Ürün içerisindeki bilyalı silindirler, ürünün dayanımını ve kullanım süresini artırır,  
her aşamada kapaęı durdurmayı sağlar.

Breaking Arms are produced according to industrial standards.  
Raw material and coating features comply with DIN norms.  
Ball bearing cylinders inside the products enhance the resistance  
usage period and they stop the cabinet in different points.

Bei der Produktion dieser Klappenhalter werden industrielle Standards berücksichtigt.  
Bei Verwendung von Rohstoffen und Beschichtung wird auf die Einhaltung  
der europaischen DIN-Normen geachtet.  
Die kugelgelagerten Rollen im Inneren verlaengern die Nutzungsdauer des Produktes.

**ADDRESS :**

Fevzi Çakmak Mah. 10768. Sk.  
Zip Code: 42050  
Karatay / Konya / TÜRKİYE

+90 332 345 0427

+90 536 566 6990



[www.bitorkfasteners.com](http://www.bitorkfasteners.com)

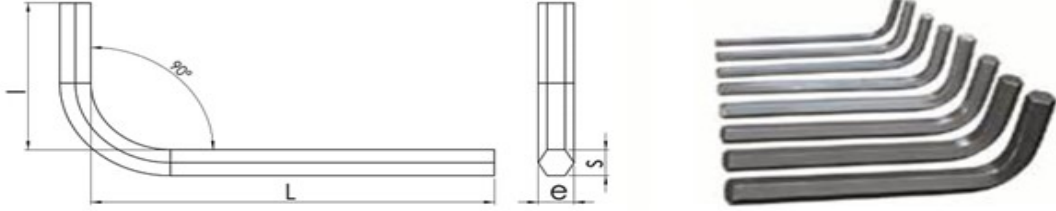


[info@bitorkfasteners.com](mailto:info@bitorkfasteners.com)





## Hexwrench/ Allen Key



Teknik Bilgiler / Technical Informations										
THICKNESS / KALINLIK			DIAGONAL / KÖŞEĞEN			TOLERANCE TOLERANS	STANDARD STANDART	TOLERANCE TOLERANS	LONG ARM UZUN KOL	TOLERANCE TOLERANS
NOMİNAL	Max.	Min.	Max.	Min.	e					
0,9	0,89	0,88	0,99	0,96	10		3			
1,3	1,27	1,24	1,42	1,37	12		40			
1,5	1,50	1,48	1,68	1,63	14	0/-1	45	0/-2	90	0/-4
2	2,00	1,96	2,25	2,18	16		50		100	0/-5
2,5	2,50	2,46	2,82	2,75	18		56		112	
3	3,00	2,96	3,39	3,31	20		63	0/-3	116	0/-6
(3,5)	3,50	3,45	3,96	3,87	22		67			
4	4,00	3,95	4,53	4,44	25		70		140	0/-7
(4,5)	4,50	4,45	5,10	5,00	26		75			
5	5,00	4,95	5,67	5,58	28		80	0/-4	160	0/-8
6	6,00	5,95	6,81	6,71	32	0/-2	90		180	0/-9
(7)	7,00	6,95	7,95	7,84	34		95	0/-5	190	
8	8,00	7,94	9,09	8,97	36		100		200	0/-10
(9)	9,00	8,94	10,23	10,10	38		105		210	
10	10,00	9,94	11,37	11,23	40		112	0/-6	224	0/-11
12	12,00	11,89	13,65	13,44	45		125		250	0/-12
14	14,00	13,89	15,93	15,70	56		140	0/-7	280	0/-13
17	17,00	16,89	19,35	19,09	63	0/-3	160	0/-8	320	0/-14
19	19,00	18,87	21,63	21,32	70		180	0/-9	360	0/-15
22	22,00	21,87	25,05	24,71	80	0/-4	200	0/-10		
24	24,00	23,87	27,33	26,97	90		224	0/-11		
27	27,00	26,87	30,75	30,36	100	0/-5	250	0/-12		

**ADDRESS :**

Fevzi Çakmak Mah. 10768. Sk.  
Zıp Code: 42050  
Karatay / Konya / TÜRKİYE

+90 332 345 0427

+90 536 566 6990



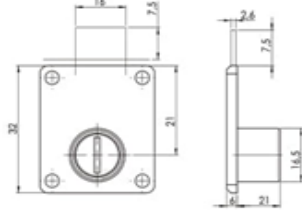
[www.bitorkfasteners.com](http://www.bitorkfasteners.com)



[info@bitorkfasteners.com](mailto:info@bitorkfasteners.com)



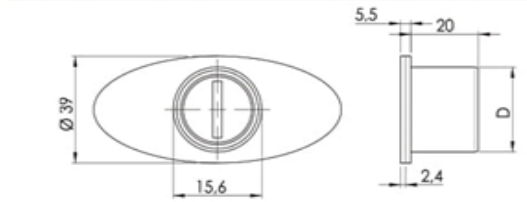
## Square Lock



### Teknik Bilgiler / Technical Informations

Malzeme:	Beyaz Alaşım
Silindir Çapı:	D16.5mmxL20mm.
Material Cylinder Bore:	White Alloy diameter of the cylinder D16.5mmxL20mm.
Material:	Weiss legiert
Zylinderdurchmesser:	D16,5 mm x L20 mm

## Oval Lock



### Teknik Bilgiler / Technical Informations

Malzeme:	Beyaz Alaşım
Silindir Çapı:	D16.5mmxL20mm.
Material Cylinder Bore:	White Alloy diameter of the cylinder D16.5mmxL20mm.
Material:	Weiss legiert
Zylinderdurchmesser:	D16,5 mm x L20 mm

**ADDRESS :**

Fevzi Çakmak Mah. 10768. Sk.  
Zip Code: 42050  
Karatay / Konya / TÜRKİYE

+90 332 345 0427

+90 536 566 6990



[www.bitorkfasteners.com](http://www.bitorkfasteners.com)



[info@bitorkfasteners.com](mailto:info@bitorkfasteners.com)



## Door Handles



### Teknik Bilgiler / Technical Informations

ODA ROZETLİ / FOR DOOR  
YALE ROZETLİ / FOR ROOM  
WC ROZETLİ / FOR WC

Alüminyum malzeme üzerine krom ve inox kaplama yapılmıştır.  
Renk: Nikel / Saten

Chrome and stainless steel coating have been done on the aluminium material.  
Color: Nickel / Satin

Es wurde Chrom- und Edelstahlbeschichtung auf Aluminiummaterial vorgenommen.  
Farbe: Nickel / Satin



### Teknik Bilgiler / Technical Informations

ODA ROZETLİ / FOR DOOR  
YALE ROZETLİ / FOR ROOM  
WC ROZETLİ / FOR WC

Alüminyum malzeme üzerine krom ve inox kaplama yapılmıştır.  
Renk: Nikel / Saten

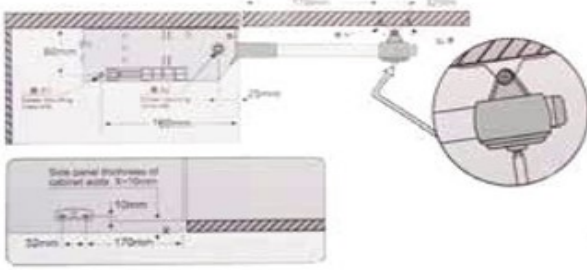
Chrome and stainless steel coating have been done on the aluminium material.  
Color: Nickel / Satin

Es wurde Chrom- und Edelstahlbeschichtung auf Aluminiummaterial vorgenommen.  
Farbe: Nickel / Satin





## Soft Closing Cabint Lift



Yüksek taşıma kapasitesi  
Estetik görünüm ve kolay kurulum  
Her pozisyonda durabilir.  
40-70 cm genişlikte ve 40 cm'e kadar yükseklikteki kapaklarda 1 adet kullanım yeterlidir.  
90-120 cm genişlikte ve 40 cm yükseklikteki kapaklarda 2 adet kullanılması gerekir.

High carriage capacity  
Aesthetic appearance and easy installation  
It could stand in every position  
Using 1 piece of this item is enough for soft cabinet lifts which have 40-70 cm wideness and from to 40 cm height.  
It should be used 2 pieces of them for soft closing cabinet lifts which have 90-120 cm wideness and from to 40 cm height.

Hohe Tragfähigkeit  
Ästhetischer Anblick und einfache Anbringung  
Bei Schrankdeckeln mit einer Breite von 40-70 cm und einer Höhe bis 40 cm ist die Nutzung von einem Teil ausreichend  
Bei Schrankdeckeln mit einer Breite von 90-120 cm und einer Höhe ab 40 cm ist die Nutzung von zwei Teilen notwendig

