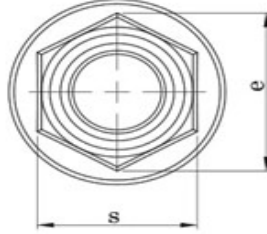
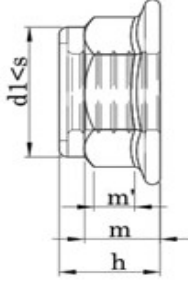
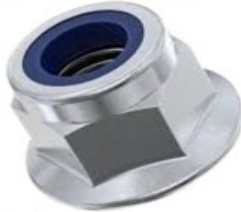


DIN 6926

HEXAGON FLANGE LOCK NUTS



Teknik Bilgiler / Technical Informations		M6	M8	M10	M12
Thread size / Anma çapı	(d)		M8 X 1,00	M10 X 1,00	M12 X 1,50
	p ₁			M10 X 1,25	M12 X 1,25
	p ₂ p ₃	1,00	1,25	1,50	1,75
c	min.	1,10	1,20	1,50	1,80
	max.	6,75	8,75	10,80	13,00
d _a	min.	6,00	8,00	10,00	12,00
	max.	14,20	17,90	21,80	26,00
d _c	min.	12,20	15,80	19,60	23,80
	max.	11,05	14,38	16,64	20,03
Diagonal / Köşegen	e	11,05	14,38	16,64	20,03
	h	9,10	11,10	13,50	16,10
Height / Yükseklik	m	5,70	7,60	9,60	11,60
	m'	3,10	4,50	5,50	6,70
Head width / Anahtar ağız	s	10,00	13,00	15,00	18,00
	r	0,36	0,48	0,60	0,72
Weight / Ağırlık	gr/p	4,28	8,72	13,80	24,64



DIN 6926 Nylon Insert Hexagon Flange Lock Nuts have a circular washer like flange shaped base that increases the weight bearing surface to distribute the load over a greater area when tightened. The flange eliminates the need to use a washer with the nut. In addition these nuts contain a permanent nylon ring within the nut that grip the threads of the mating screw/bolt and functions to resist loosening. DIN 6926 Nylon Insert Hexagon Flange Lock Nuts are available with or without serrations. The serrations function to act as another locking mechanism to reduce loosening due to vibrational forces.